

THE CHELSEA SOCIETY

FIRST ANNUAL REPORT

for the year ended March 31st, 1928

To be presented at the Annual Meeting to be held
at Wentworth House, Swan Walk, Chelsea,
on Wednesday, May 16th, 1928
at Five o'clock.

THE CHELSEA SOCIETY

Founded, April, 1927

“To protect and foster the amenities of Chelsea”

COUNCIL :

Chairman

C. H. ST. J. HORNBY, Esq.

REGINALD BLUNT, Esq.

E. J. CHAPMAN, Esq., F.R.S.A.,
Vice-President Chelsea Chamber of Commerce

RT. HON. LORD ERNLE, M.V.O.

EMSLIE J. HORNIMAN, Esq.

AUBREY T. LAWRENCE, Esq., K.C.

RT. HON. MARY, COUNTESS OF LOVELACE

PERCY LOVELL, Esq.,
Organising Secretary, The London Society

GRAHAM PETRIE, Esq., R.I.,
Chelsea Arts Club

Hon. Secretary :

REGINALD BLUNT,
12 Carlyle Mansions, Cheyne Walk,
Chelsea, S.W.3

Hon. Treasurer :

W. H. MAEER.

Bankers :

BARCLAY'S BANK,
348, King's Road, S.W.3

THE CHELSEA SOCIETY

Founded, April, 1927

"To protect and foster the amenities of Chelsea."

The Council of the Chelsea Society presents the first Annual Report, for the year ending March 31st, 1928.

FOUNDATION AND CONSTITUTION

THE Society was founded and the Council appointed at a meeting held at Wentworth House, Chelsea Embankment, on April 1st, 1927, at which Lord Ernle took the Chair.

The Council has drawn up a constitution and prospectus of the aims of the Society and conditions of membership, which may be obtained from the Secretary. One hundred and ten members have been enrolled during the first year.

THE CHELSEA EXHIBITION

The Council decided, at their first meeting, to hold an inaugural Loan Exhibition, illustrative of Chelsea past and present, at Chelsea Town Hall. The Exhibition was held in the Council Chamber from June 8th to the 18th, and was a great success. Over 200 paintings, drawings, prints and photographs of Chelsea, representing the work of sixty-four artists, were kindly lent by their owners. The collection also included an interesting series of Chelsea books, an extremely fine exhibit of Chelsea china and pottery; tokens, passes, and autograph letters, and a series of over seventy water colour drawings of Old Chelsea by Mr. Walter Greaves. His Majesty The King headed the list of exhibitors, and The

Queen paid a visit to the Exhibition on June 16th, making many interested enquiries about the pictures and Chelsea china. Over 1,700 people visited the Exhibition during the nine days it was open. An attractive illustrated Catalogue was printed, and sold well, and after payment of all expenses, the proceeds shewed a net balance of about £35. The thanks of the Council are due to the owners (over 50 in number) who generously lent their Chelsea treasures for this occasion.

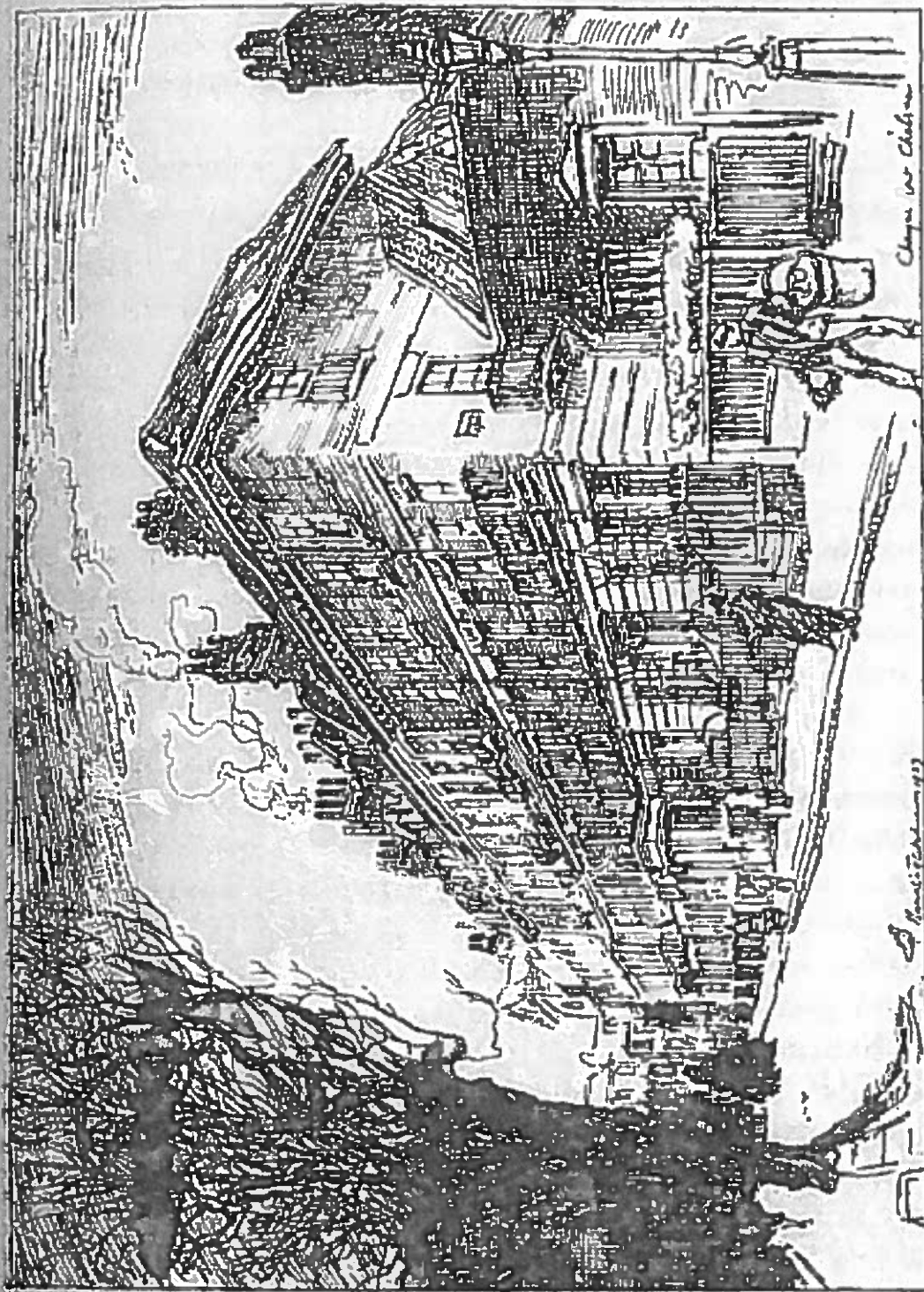
The following are brief notes on some of the matters which came under the consideration of the Council during this its first year.

DUKE OF YORK'S SCHOOL GROUND

The Council heard with great satisfaction at its first Meeting that following on the Deputation to the War Office (which its Chairman and Secretary had attended) the proposal to erect buildings on this ground was not for the present to be proceeded with.

LOMBARD TERRACE

It is greatly regretted that the efforts made to save this interesting little row of old houses at the bottom of Church Street and close to Chelsea Old Church have proved unavailing. A statement of the historic associations of the Terrace was printed with forms of petitions for its preservation, and these were signed by over 450 people, and forwarded by Sir Samuel Hoare, M.P. for Chelsea, to Major Sloane Stanley, the owner; who, however, replied regretting that he could not see his way to save the old houses. He has undertaken that the Chelsea Society shall have an opportunity of seeing the plans for the new buildings which are to be erected on the site. It is hoped that these will not be of a height or character that will greatly obscure the Old Church Tower, which stands close



from the drawing by H. H. F. 1877

QUEEN ANNE HOUSES, CHEYNE ROW.

to them, but it is inevitable that the present balance and façade of this typical corner of the old riverside, which Sir William Orpen appealed for as "a thing of beauty in all lights and at any time of the year," will be sadly altered by the destruction of the Terrace.

THE BATTERSEA SUPER POWER STATION

Public attention was drawn, by letters in *The Times* from the Secretary to the Society, and others, to the plans for the erection of a very large electric power station on riverside land adjoining the eastern end of Battersea Park: and it was pointed out that such a factory, consuming 15,000 tons or more of coal per week, and in close proximity to Chelsea and Westminster, could hardly fail seriously to vitiate the air of the neighbourhood. A protest was lodged on behalf of the Society; correspondence followed, and a joint deputation, including representatives of the Westminster City, Chelsea Borough, and Chelsea Society Councils was eventually received by the Electricity Commissioners, and subsequently by the London Electricity Board. The Deputation expressed their surprise and alarm at the proposal to place a large coal consuming station close to Westminster Abbey, the Houses of Parliament, the Royal Hospital and the large residential areas of South-west London and Chelsea, upon which the smoke from 16 high chimneys would be carried by our prevailing Southerly winds; and Chelsea's present experience from the 4 Lots Road Power Station chimneys was instanced as evidence. Detailed discussion followed from which it became evident that there was no likelihood of vetoing the Battersea Scheme, which had, indeed, been already sanctioned; that the Station would be the largest in the S.E. England Scheme, and that the advantages of having it on the river and near the centre of the load were con-

sidered to have outweighed any objections. The Commissioners pointed out that in granting their consent they were embodying " a specific condition that the operating Company should in the construction and use of the Generating Station take the best known precautions for the due consumption of smoke, and for preventing, as far as reasonably practicable, the evolution of oxides of sulphur, and generally for preventing any nuisance arising from the generating station or from any operations thereat."

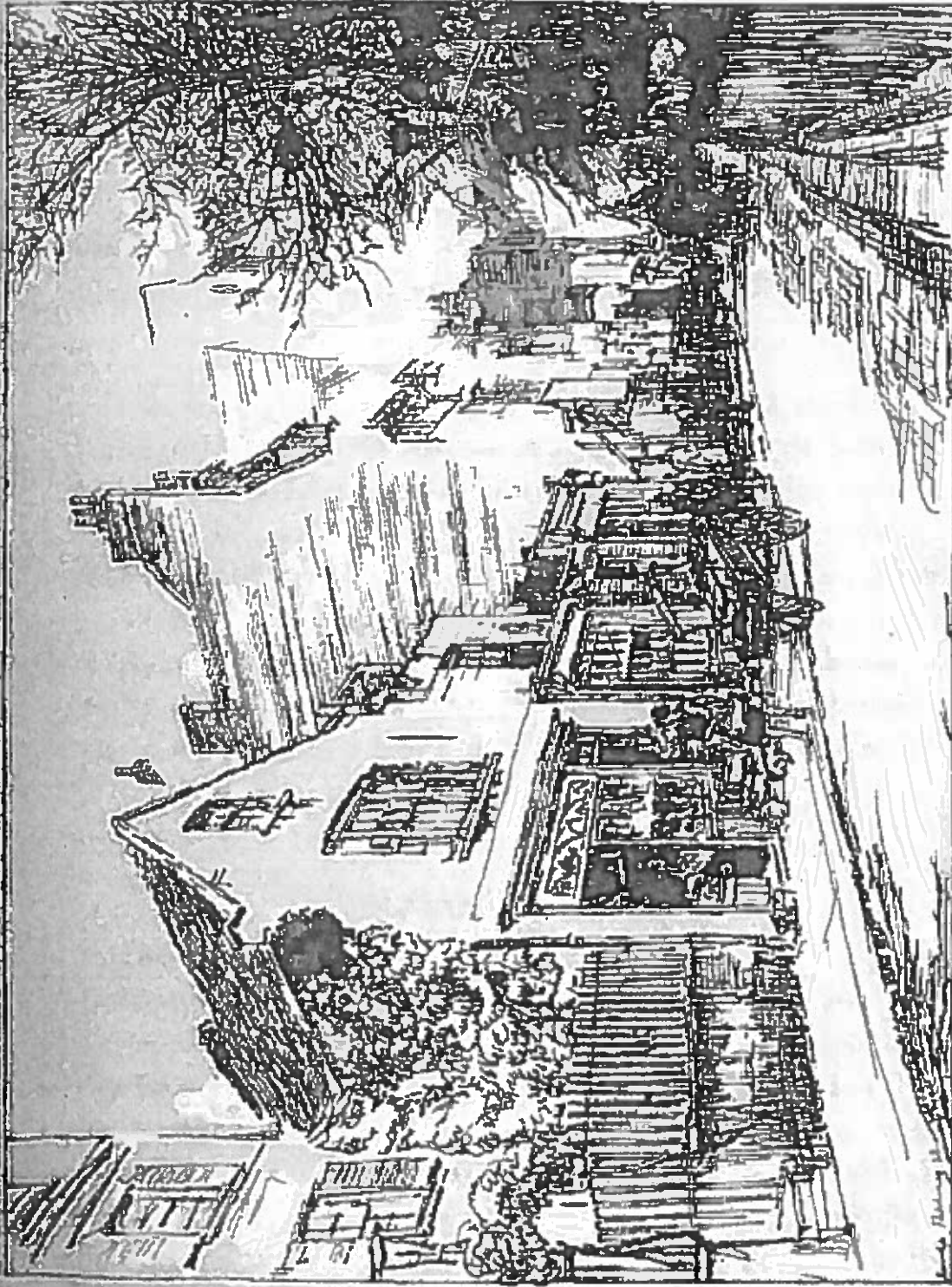
The deputation pressed upon the Commissioners that, as this condition had been embodied in their sanction, appeal should lie to them for its due enforcement when a nuisance was found to exist : and a promise was given that this point should be carefully considered.

THE TREES IN CHEYNE ROW

The Works Committee of the Chelsea Borough Council having in November recommended "that the nine trees on the west side of Cheyne Row be removed", the Council of The Chelsea Society immediately printed and issued to their members a protest, headed "A deplorable Proposal," in the hope of saving this picturesque and interesting row of ailanthus and plane trees. The protest received wide spread public support, and happily resulted in the reprieve of seven out of the nine condemned trees, including all the Trees of Heaven.

THREATENED QUEEN ANNE HOUSES IN CHEYNE ROW

The Council having been informed that the London County Council had referred for observation to the Chelsea Borough Council, a scheme for the development of the vacant land in Cheyne Walk behind Nos. 43 to 45, which entailed the demolition of Nos. 16 and 18, Cheyne Row, in order to form a second entrance to the proposed new road



from the drawing by *Hanslip Fletcher*.

TERREY'S P. A. D. SITE OF SHREWSBURY HOUSE, CHEYNE WALK

steps were at once taken to support the Borough Council if it should decide to oppose the Scheme. It was pointed out that these Cheyne Row houses (dated 1708) had been commended to The King as "especially worthy of preservation" by the Royal Commission on Historical Monuments, and that their destruction would not provide the most satisfactory entrance to the land in question. Here again the Society's protest received powerful and immediate public support; the Borough Council strongly opposed the scheme, and the County Council rejected it.

SHREWSBURY HOUSE

The scheme above referred to also entailed the demolition of Nos. 45 to 43 Cheyne Walk, which include Terrey's little old fruit shop, and substantial remains of the western wing of Shrewsbury House, built here in the 16th century, and probably the oldest remaining house in Chelsea. Some interesting panelling, doorways and a staircase still survive here, and it would be fortunate for lovers of old Chelsea if these could be incorporated in some way into the building destined to occupy this site. Terrey's quaint little shop, if it has to go, will be a real loss among the vanishing features of Cheyne Walk.

SLOANE SQUARE

The Council of the Society is naturally interested in the prospective "lay out" of Sloane Square, where the roundabout traffic system has been permanently adopted. Various attractive suggestions have been made, but it is understood that, apart from financial considerations, there are difficulties due to the Underground Railway and the existing public convenience. The Borough Council have courteously promised, through our late Chairman, that the Society shall have an opportunity of seeing the plans, when these have taken shape.

THE CHAIRMAN

The Council has to refer with great regret to the loss of their first Chairman, Sir Albert Gray, K.C.B., K.C., who died on February 27th last. Others have borne testimony to his unfailing interest in Chelsea and its betterment. In spite of increasing illness and exhaustion, his active interest in this little Society was sustained to the very end; in one of the last letters he was able to dictate was to the Secretary. Its Council met at his house; its rules and constitution were drafted by him, and his sound counsel and judgment were always at its disposal.

The Council is glad to report that Mr. C. H. St. Hornby has consented to accept the vacant Chairmanship.

The statement of accounts for the year is appended.

Members are asked to mention the Society to Chelsea friends likely to be interested. The Secretary will gladly forward further copies of this Report, and of the Prospectus of the Society, to any addresses with which he may be furnished. The minimum Entrance Fee for Members is £1, and for Associates, 5/-. There is, at present, no annual subscription.

Signed,

C. H. ST. J. HORNBY,
Chairman

REGINALD BLUNT,
Secretary

THE CHELSEA SOCIETY,
Statement of Receipts and Expenditure for the year ended March 31, 1928.

CR.

<p>DR.</p> <p>To Members' Entrance Fees 118 6 0</p> <p>.. Exhibition Receipts—</p> <p>Admission and Sale of 101 1 0</p> <p>Catalogues 10 0 0</p> <p>Commission on Sales 50 0 0</p> <p>Insurance Claim received 54 3 0</p> <p>Advertisements in Catalogues 215 4 0</p> <p>.. Amount due to Secretary 4 3 0</p>	<p>By Printing Account—</p> <p>General 8 0 6</p> <p>Exhibition 58 14 6</p> <p>Posters and Posting 8 12 3</p> <hr/> <p>Insurance Premium 22 11 0</p> <p>Insurance Claim Paid 50 0 0</p> <hr/> <p>Stands and Carriage of Show 8 10 0</p> <p>Cases 3 19 6</p> <p>Mounting Exhibits 1 10 0</p> <p>Decoration of Chamber, &c. 4 11 6</p> <p>Attendants and Gratuities 5 9 0</p> <p>Advertisements 24 0 0</p> <hr/> <p>Postage and Telegrams 6 2 2</p> <p>Typing 2 11 4</p> <p>Stationery 0 17 6</p> <p>Cheque Book and Rubber Stamp 0 12 6</p> <hr/> <p>.. Balance at Bank 182 1 9</p> <p>.. .. . 155 11 3</p> <hr/> <p style="text-align: right;">£337 13 0</p>
-----------------------------------------------------------------------------------------------------------------------------------------------------------------------------------------------------------------------------------------------------------------------------------------------------------------------------------------------------------------------	--------------------------------------------------------------------------------------------------------------------------------------------------------------------------------------------------------------------------------------------------------------------------------------------------------------------------------------------------------------------------------------------------------------------------------------------------------------------------------------------------------------------------------------------------------------------------------------------------------------------------------------------------------------------------------------------------------------------------------------------------------------------------------------------------------

Audited and found correct—
W. H. MAER.

18th April, 1928.

£337 13 0

First List of Members.

MRS. EDWIN ABBEY
MRS. ACAR

BRIGADIER GENERAL LIONEL BANON, C.B.
R. E. BRUCE BEAL, ESQ.
MISS VERA BERINGER
REGINALD BLUNT, ESQ.
MISS MURIEL BOND
MRS. BOTTERELL
MRS. FREDERICK BRAUND
A. CURTIS BROWN, ESQ.
MRS. CURTIS BROWN
MISS RUTH MORTLOCK BROWN
GEORGE BUCKLE, ESQ.
MISS SYBIL BUXTON

CHARLES CARPENTER, ESQ., D.Sc., C.B.E.
LADY CHALMERS
E. J. CHAPMAN, ESQ.
CAPTAIN SETON CHRISTOPHER, J.P.
GEORGE J. COATES, ESQ.
SIR THEODORE COOK
MISS ETHEL COLLUM
LADY COURTNEY OF PENWITH

ERNEST DAVIES, ESQ.
LADY BERTHA DAWKINS
REV. WALFORD DEAKIN

RT. HON. LORD ERNLE, P.C., M.V.O.
LADY ERNLE

SIR JOHN FOSTER FRASER
LIEUT.-GENERAL SIR WILLIAM FURSE, K.C.B.

LADY GRAY
OSCAR GRIDLEY, ESQ.
DR. W. S. GRIFFITH, C.B.E.
MRS. W. GRIFFITH
MRS. ARCHIBALD GROVE

ERIC HALL, ESQ.
MRS. LEONARD HARRISON
MRS. LEONARD HARROLD
MISS HAWLEY
RT. HON. SIR SAMUEL HOARE,
G. P. JACOMB HOOD, ESQ., M
C. H. ST. J. HORNBY, ESQ.
MRS. ST. J. HORNBY
EMSLIE J. HORNIMAN, ESQ.
MRS. HORNIMAN
HON. EVELYN HUBBARD
HON. MRS. EVELYN HUBBARD
MRS. HOLMAN HUNT
JAMES HYDE, ESQ.

MRS. KNIGHT
CAPTAIN G. NORMAN KNIGHT
AUBREY T. LAWRENCE, ESQ.
MRS. AUBREY LAWRENCE
ERNEST LAW, ESQ., C.B.
SEYMOUR LESLIE, ESQ.
MARY COUNTESS OF LOVELAC
PERCY LOVELL, ESQ.
MISS JESSE LOVELL
MRS. LUCAS
GENERAL THE RT. HON.
SIR NEVILLE LYTTEL
HON. LADY LYTTTELTON

MISS MACNAMARA
COLONEL C. L. MALONE, M.
MISS A. B. MARSHALL
MISS MARY MAUD
E. L. MEINERTZHAGEN, ESQ.
MRS. MEINERTZHAGEN
SIR JOHN MELLOR
LADY MELLOR
MISS MONTRESOR
LT.-COL. VAUGHAN MORGAN,

GEORGE J. NEWSON, ESQ.

MRS. WELLESLEY PAGET

MICHAEL PALAIRET, ESQ., C.M.G.

MISS ST. JOHN PARTRIDGE

M. MARESCO PEARCE, ESQ.

MRS. MARESCO PEARCE

LADY PEDDER

GROHAM PETRIE, ESQ.

DAME JESSIE WILTON PHIPPS

HON. DOROTHY PICKFORD

MRS. H. H. PIGGOTT

MISS EDITH PLACE

MISS LILLIAS PLAYFAIR

SIR JOHN HORSBRUGH PORTER, BART.

MRS. RAWLINSON

MRS. ALYS RUSSELL

MRS. M. A. SCOTT-ELLIOT

LADY SCOTT-MONCRIEFF

HON. WILLIAM SIDNEY

L. PEARSALL SMITH, ESQ.

MISS STUART

MISS M. L. STUART

MRS. SWANN

SIR OLIVER SWANN, K.C.B.

LADY SWANN

HENRY TONKS, ESQ.

PERCY TUBBS, ESQ.

A. M. TURNER, ESQ.

MRS. HUBERT WALTER

L. HUTH WALTERS, ESQ.

MRS. L. D'O. WALTERS

M. H. H. WALTERS, ESQ.

SIR N. WATERHOUSE, K.B.E.

H. WEAVER, ESQ.

F. J. WELCH, ESQ.

SIR PERCY WILBRAHAM, BART.

MISS WILBRAHAM

W. H. WRIGHT, ESQ.

MISS A. ZILERI



A few copies of the *Illustrated Catalogue of the Chelsea Exhibition* held by the Society at Chelsea Town Hall last June remain on hand. A copy will be posted on application to the Secretary at 12, Carlyle Mansions, Cheyne Walk, S.W.3., enclosing sixpence in stamps.